

EN

MEININGER Hotels

AT A GLANCE

[meininger-hotels.com](https://www.meininger-hotels.com)



**MEININGER
HOTELS**



Content

Intro

About Us	
Our Services	
Groups	
Hotel Overview	

Austria

Innsbruck Zentrum	7
Salzburg City Center	8
Wien Downtown “Franz”	9
Wien Downtown “Sissi”	10

Belgium

Bruxelles City Center	11
Bruxelles Gare du Midi	12

Denmark

Urban House	
Copenhagen	13

France

Bordeaux Gare Saint-Jean	14
Lyon Centre Berthelot	15
Marseille Centre	
La Joliette	16
Paris Porte de Vincennes	17

Germany

Berlin Airport	18
Berlin Alexanderplatz	19
Berlin East Side Gallery	20
Berlin Hauptbahnhof	21
Berlin Mitte	
“Humboldthaus”	22
Berlin Tiergarten	23
Bremen Hauptbahnhof	24
Dresden Zentrum	25
Frankfurt/Main Airport	26
Hamburg City Center	27
Heidelberg Hauptbahnhof	28
Köln West	29
Leipzig Hauptbahnhof	30
München City Center	31
München Olympiapark	32

Hungary

Budapest Great	
Market Hall	33

Italy

Milano Garibaldi	34
Milano Lambrate	35
Roma Termini	36
Venezia Mestre	37

Netherlands

Amsterdam Amstel	38
Amsterdam City West	39

Poland

Krakow Centrum	40
--------------------------------	-----------

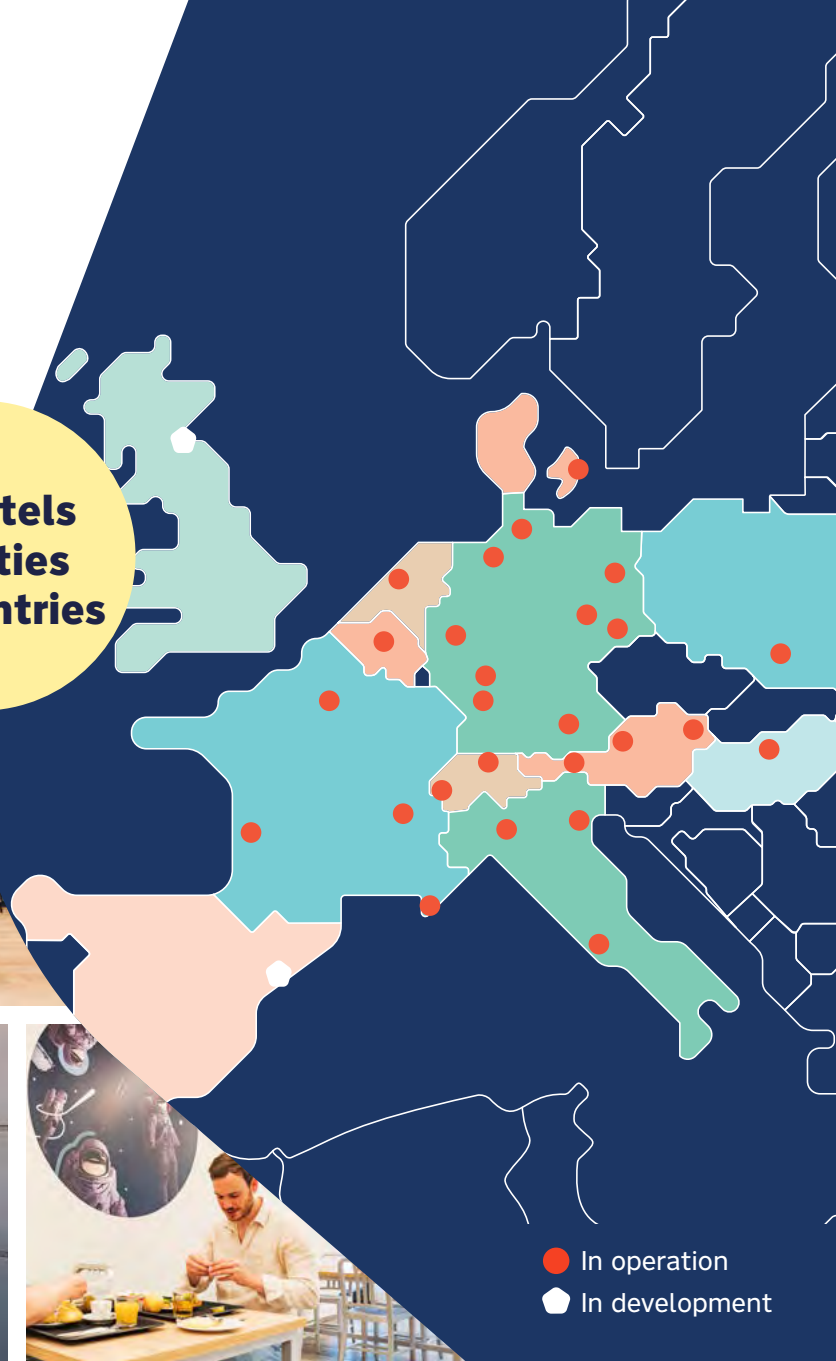
Switzerland

Genève Centre	
Charmilles	41
Zürich Greencity	42

About us

36 hotels in 26 European cities offer the ideal accommodation for city breaks, business trips, journeys around the world, family holidays or school class trips. Everyone feels at home here because MEININGER brings together the best elements of a hostel and hotel so you have the perfect backdrop to explore the top European cities we live in. Modern rooms at good rates in central locations - this is MEININGER. And for all our guests the fantastic MEININGER atmosphere is always included!

36 Hotels
26 Cities
10 Countries



● In operation
○ In development

Our Services



BAR



BREAKFAST



GAME ZONE



GUEST KITCHEN



LUGGAGE ROOM



PETS



LOUNGE



PACKED LUNCH



24/7 RECEPTION



LOCKERS



LATE CHECK OUT



LAUNDRY



Groups

Whether it is a big group on a stag night, school class on a study trip or a club holiday, we are here to ensure you have a fantastic time. Our dedicated team of group & youth travel specialists make sure you have everything you need during your stay. With over 20 years of group-travel experience, we know what counts.

At MEININGER, we have a specially designed programme for groups of 12 people and above. This includes reduced prices and individually bookable meals. Enjoy our affordable and comfy multi-bedded rooms, step into the game zone or chill in our lobby area. We're also happy to give you city-tips and sightseeing tickets, just come by the reception and say hi.



Perks for groups



**ENSUITE
BATHROOM**



**BEDDING &
TOWELS INCL.**



**24 HOUR
RECEPTION**



PACKED LUNCH



**BAR &
GAME ZONE**



**BREAKFAST
INCLUDED**

Hotel Overview

Site locations	Country	Rooms	Beds
Amsterdam Amstel	Netherlands	185	802
Amsterdam City West	Netherlands	321	1177
Berlin Airport	Germany	156	357
Berlin Alexanderplatz	Germany	90	328
Berlin East Side Gallery	Germany	243	825
Berlin Hauptbahnhof	Germany	296	820
Berlin Mitte “Humboldtthaus”	Germany	117	424
Berlin Tiergarten	Germany	238	847
Bordeaux Gare Saint-Jean	France	173	526
Bremen Hauptbahnhof	Germany	156	378
Bruxelles City Center	Belgium	170	727
Bruxelles Gare du Midi	Belgium	170	678
Budapest Great Market Hall	Hungary	184	744
Urban House Copenhagen	Denmark	228	879
Dresden Zentrum	Germany	173	719
Frankfurt/Main Airport	Germany	168	418
Genève Centre Charmilles	Switzerland	103	362
Hamburg City Center	Germany	116	423

Site locations	Country	Rooms	Beds
Heidelberg Hauptbahnhof	Germany	100	331
Innsbruck Zentrum	Austria	75	260
Köln West	Germany	209	747
Kraków Centrum	Poland	135	507
Leipzig Hauptbahnhof	Germany	126	404
Lyon Centre Berthelot	France	169	590
Marseille Centre La Joliette	France	194	574
Milano Garibaldi	Italy	80	268
Milano Lambrate	Italy	131	475
München City Center	Germany	94	394
München Olympiapark	Germany	172	822
Paris Porte de Vincennes	France	249	946
Roma Termini	Italy	118	315
Salzburg City Center	Austria	101	362
Venezia Mestre	Italy	112	434
Wien Downtown “Franz”	Austria	131	487
Wien Downtown “Sissi”	Austria	102	294
Zürich Greencity	Switzerland	174	582
Total Capacities		5,759	20,226

Innsbruck Zentrum



The first MEININGER Hotel in the middle of the Alps. The building in Innsbruck is located right in the city center and will welcome guests with 74 rooms and 259 beds. The shopping streets and the old town can be reached within 5 – 10 minutes by foot, as well as attractions such as the Golden Roof and the Innsbruck Cathedral. The tram line 3 and several bus lines stop right in front of the hotel. The location is also great for exploring the alpine surroundings of Tyrol.

THE CALL OF THE MOUNTAINS

If you visit Innsbruck, you'll "hear" the call of the surrounding mountains. The interior design of the hotel reflects the magical appeal of the Tyrolean mountains. Throughout the hotel, there are displays of all the different sports done in these mountains including paragliding, snowboarding or mountain biking. The furniture and wallpaper also reflect these themes and activities.

74 rooms/259 beds

Additional Hotel amenities

- Sports gear storage

Distance from Main Station

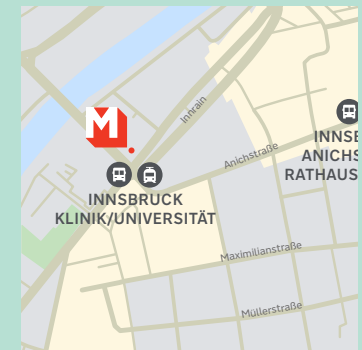
1.3 km Innsbruck Hauptbahnhof

Distances

800 m Golden Roof

800 m Helbling House

850 m Historic Downtown



Salzburg City Center



101 rooms/362 beds

Additional Hotel amenities

- Parking (subject to a fee)
- Conference room
- Lounge with stage
- Ski cellar
- Sun terrace

Distance from Station

1.4 km Salzburg Sam

Distances

- 2.0 km Mozart's home
- 2.1 km Mozart's birthplace
- 2.4 km Salzburg Cathedral



Salzburg has more to offer than just Mozartkugeln, festivals and the Alte Residenz, Salzburg is a „small town of world standing“ and today an important location for trade exhibitions. The MEININGER Hotel Salzburg City Center is located close to the historic centre by the Kapuzinerberg in the ZIB shopping centre. The old town, Mozart House, Salzburg Cathedral and the Hohensalzburg Fortress can be reached by bus from the hotel in just 15 minutes.

THE STAGE IS YOURS

Those who feel a calling to something higher can take a courageous step up to the stage in the MEININGER Hotel Salzburg City Center and present their work of art to the other guests. Mozart also started out small.



Wien Downtown “Franz”



The MEININGER Hotel Wien Downtown Franz is in Vienna's second district, Leopoldstadt. It's a great spot to explore the city, close to Augarten and the Danube Canal. You can easily walk or take the subway to the historic old town, where you'll find attractions like the Hofburg, Winter Palace, and St. Stephen's Cathedral. The Schottenring U-Bahn station is only a 7-minute walk away. Also, head to the Karmelitermarkt, an old market just a 10-minute walk from the hotel. The main train station is a 20-minute ride on public transport, and the airport is 40 minutes away.

MEININGER Hotel Wien Downtown “Franz”, Rembrandtstr. 21, 1020 Vienna, Austria



FRANZ

Yes, Franz cannot be without Sissi and Sissi cannot be without Franz and this is why the two MEININGER Hotels Wien Downtown “Franz” and “Sissi” are only two streets apart. In comparison to Sissi, Franz was considered more prosaic and sober. The interior design of the hotel therefore follows clear and objective lines with alpine accents.

131 rooms/487 beds

Additional Hotel amenities

- Underground parking (subject to a fee)

Distance from Main Station

4.8 km Wien Hauptbahnhof

Distances

1.8 km St. Stephen's Cathedral

2.1 km Prater

2.8 km Museum district



Wien Downtown “Sissi”



The MEININGER Hotel Wien Downtown „Sissi“ is quiet yet centrally located, making it perfect for exploring Vienna’s city center. You can walk to famous landmarks like the town hall, Hofburg, and St. Stephen’s Cathedral from here. The Taborstrasse U-Bahn station is just a 5-minute walk away but opt for the closer Schottenring station. It’s only a 4-minute walk from Herminengasse. Also, you can easily reach Schönbrunn Palace in under 20 minutes with the U4 metro line.



102 rooms/294 beds

Additional Hotel amenities

- Parking (subject to a fee)

Distance from Main Station

4.3 km Wien Hauptbahnhof

Distances

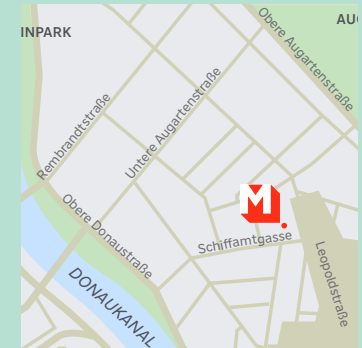
1.3 km St. Stephen’s Cathedral

1.8 km Prater

2.2 km Vienna State Opera

SISSI CHARM

What would Vienna be without its Sissi cult? She was the playful half of the imperial dream couple and this is also reflected in the interior design of the hotel: affectionate little details convey the proverbial Viennese charm with casual elegance.



Bruxelles City Center



The MEININGER Hotel Bruxelles City Center is run completely CO2-neutral on the site of a former brewery building, and art was exhibited in this brick building before its conversion. It shows that being comfy and caring for the environment can go hand in hand! Plus, it's easy to get to all the city's attractions thanks to great transport links along the Brussels-Charleroi canal.

THE URBAN ARTIST'S HOME

Treasures from a street art event that took place here in the past were discovered when the brick building was being converted into a hotel. Inspiration enough for the design theme of the hotel. Twenty artists from across Europe were involved in the interior design as part of "the urban artist's home" project.

150 rooms/727 beds

Additional Hotel amenities

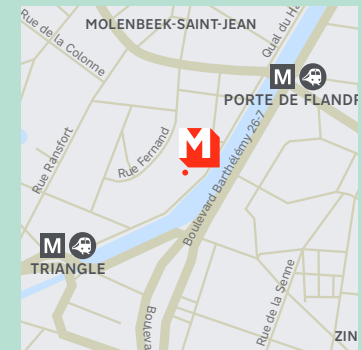
- Gallery
- Terrace

Distance from Main Station

1.8 km Bruxelles Midi

Distances

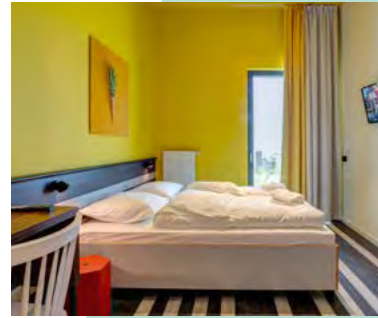
- 1.2 km Brussels Stock Exchange & Belgian Beer World
- 1.7 km Mont des Arts
- 1.4 km Grand Place



Bruxelles Gare du Midi



Only a quick 5-minute stroll from Belgium's biggest train station, the MEININGER Hotel Brussels Gare du Midi has great public transport links. You can easily walk to the charming old town, lots of museums, galleries, parks, and shopping streets like Rue Neuve. The city center's Grote Markt square is just a 20-minute walk away. And if you're driving, we've got underground parking!



SURREAL AND FANTASTICAL WORLDS
The MEININGER Hotel Bruxelles Gare du Midi invites you on a journey of discovery through an illusionary world. The interior design is inspired by the Belgian surrealist artist René Magritte.

150 rooms/678 beds

Additional Hotel amenities

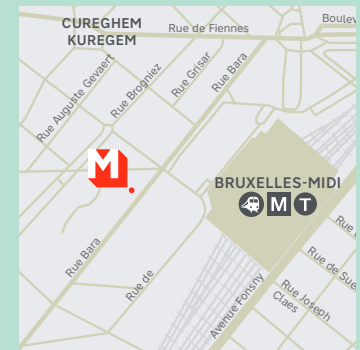
- Underground parking (subject to a fee)
- Terrace

Distance from Main Station

500 m Bruxelles Gare du Midi

Distances

- 1.8 km Halle gate museum
- 1.7 km Marollen
- 2.3 km Lotto Park Stadium



Urban House Copenhagen by MEININGER

228 rooms/879 beds



Additional Hotel amenities

- Quiet room
- Film room

Distance from Main Station

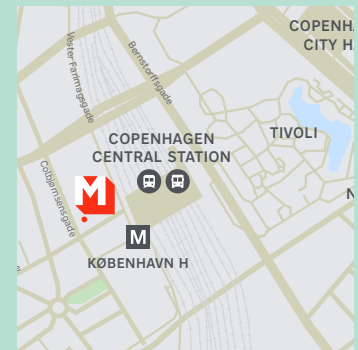
270 m København
Hovedbanegård



Distances

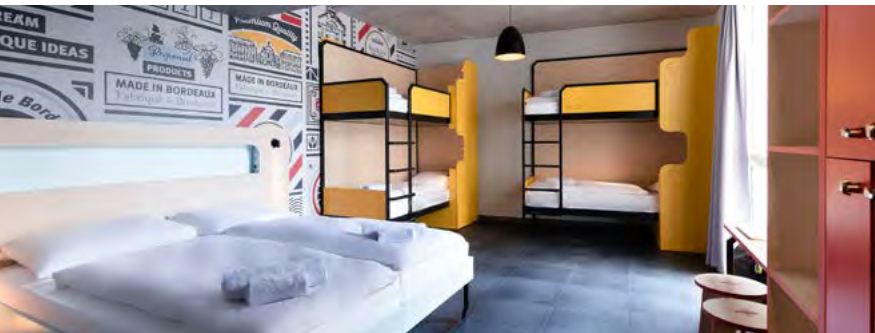
- 0.4 km Tivoli Gardens
- 0.7 km Ny Carlsberg Glyptotek
- 2.7 km Copenhagen Zoo

The Hotel Urban House Copenhagen by MEININGER is located in Copenhagen's hip Vesterbro district. Numerous cafés, restaurants, clubs, galleries and designer boutiques make the neighborhood the coolest location in the city. The city center with its town hall square and pedestrian zone is just a few minutes' walk from the hotel, which is also close to the main railway station. The rooms of the hotel are spread over several older buildings that are connected to each other.



Urban House Copenhagen by **MEININGER**, Colbjørnsensgade 11, 1652 Copenhagen, Denmark

Bordeaux Gare Saint-Jean



The MEININGER Hotel Bordeaux, with 173 rooms and 526 beds, is right by the central station, Gare de Bordeaux-Saint-Jean, making it a great place to start exploring the city. You can walk to the charming old town with its UNESCO World Heritage Gothic buildings in just 15 minutes. The main train station is only a 7-minute walk away, and you can easily catch trams to get around the city from there.

TRADEMARK

Get inspired by the city's striking beauty in the MEININGER Hotel Bordeaux. The interior design reflects Bordeaux's riveting transformation from the old medieval trade city to the modern urban gem it represents today. The hotel indulges you with the coziness of the region's old vineyard châteaux, its bustling vibes of today's art scene, and an intoxicating mix of nature and industrialization.

173 rooms/526 beds

Additional Hotel amenities

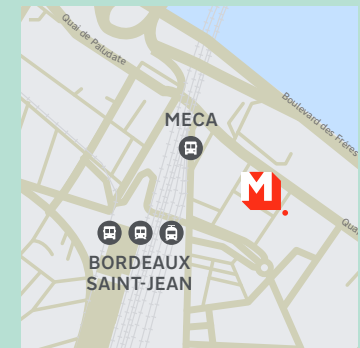
- Terrace

Distance from Main Station

600 m Bordeaux Saint-Jean

Distances

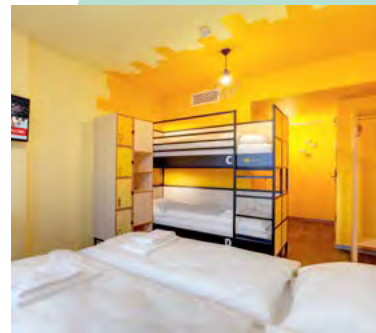
- 1.5 km Basilique de Saint-Michel
- 2.3 km Place de la Bourse
- 2.7 km Cathédrale Saint-André



Lyon Centre Berthelot



The MEININGER Hotel Lyon Centre Berthelot is truly exciting. The building, based in France's third largest city, offers 169 rooms and 590 beds on 7 floors. The hotel is located close to the city center and very well connected to public transport. The building is situated near the train station Gare de Lyon Perrache. The next tram and metro station is just a few minutes walk away. For guests arriving by car, more than 70 underground parking spaces are available.



LUMIÈRE

The interior design of the hotel is inspired by the creators of the film, the Lumière brothers, as well as the annual Festival of Lights "Fête des Lumières". The result: exceptional lighting installations displaying a multitude of colours across the light spectrum and a special atmosphere across every floor of the hotel.

169 rooms/590 beds

Additional Hotel amenities

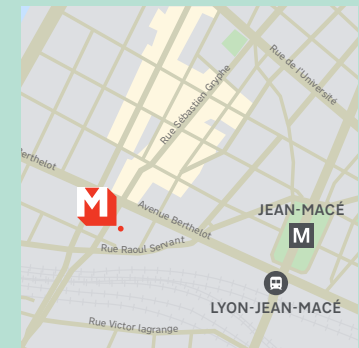
- Underground parking (subject to a fee)
- Terrace

Distance from Main Station

500 km Lyon-Jean-Macé

Distances

- 1.9 km Statue of Louis XIV
- 2.1 km Place des Jacobins
- 2.3 km Montluc prison



Marseille Centre La Joliette



The MEININGER Hotel Marseille Centre La Joliette is located in the bustling area of La Joliette which features a charming mix of historic and modern attractions. It takes only 10 minutes on foot to reach the old port with its art galleries, shopping areas and restaurants as well as the Joliette metro station. The Old Town is about 10 minutes walking distance from the hotel. Marseille Airport can be reached by car in 30 minutes or in 60 minutes via public transport.

MEININGER Hotel Marseille Centre La Joliette, 25/27 Rue de Forbin, 13002 Marseille, France



194 rooms/572 beds

Additional Hotel amenities

- Parking
(subject to a fee)
- Pétanque field
- Garden
- Terrace

Distance from Main Station

0.6km Gare de Marseille-Saint-Charles

Distances

1 km Les terrasses du Port
1 km Le Panier
1.3 km MUCEM Museum



MELTING POT MARSEILLE

Mediterranean cultures, pastimes & turquoise bays: Immerse yourself in maritime coziness with delicate shades borrowed from nature, colorful mosaics, and modern Arabesque design details. Influenced by the lively past of this Mediterranean metropolis, its Old Port and the beautiful turquoise bays of the Calanques, the interior design of the MEININGER Hotel Marseille reflects the wild, stunning beauty of contemporary Marseille and its rich cultural heritage.

Paris Porte de Vincennes



The MEININGER Hotel Paris Porte de Vincennes is in the 12th arrondissement near the Porte de Vincennes metro station, providing easy access to Disneyland and the Louvre. You can also visit iconic landmarks like Notre Dame, the Eiffel Tower, and the Arc de Triomphe using the metro or Gare de Lyon. Paris-Charles de Gaulle and Paris-Orly airports are nearby. You can also explore La Coulée Verte, just a 4-minute walk away, Château de Vincennes, a 5-minute drive or 15-minute bus ride, and Parc Zoologique de Vincennes, accessible in 4 minutes by car or 15 minutes by bus, with a short walk!

MEININGER Hotel Paris Porte de Vincennes, 37, Boulevard Carnot, 75012 Paris, France

249 rooms/946 beds

Additional Hotel amenities

- Terrace

Distance from Station

0.7km Porte de Vincennes

Distances

350 m La Coulée Verte

1.5 km Parc zoologique de
Vincennes

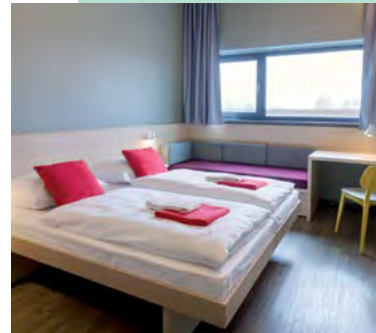
1.8 km Château de Vincennes



Berlin Airport ✈️



Just a stone's throw from Berlin Schönefeld Airport in the new Business Park Berlin, MEININGER Hotel Berlin Airport offers ultimate comfort with great transport connections. You can reach Alexanderplatz in about half an hour via the nearby Grünbergallee S-Bahn station or by using the Autobahn. Even though there's no shuttle service available, getting to the airport takes just around 5 minutes by other means of transport!



BERLIN - THE GREEN CITY

The interior design of the hotel mirrors the green side of the capital. Creative wall and photo displays depict Berlin's numerous lush green locations. A total of three sightseeing tours across the floors showcase excursion destinations worth visiting. This gives guests a first impression of what is probably the greenest metropolis in the world.

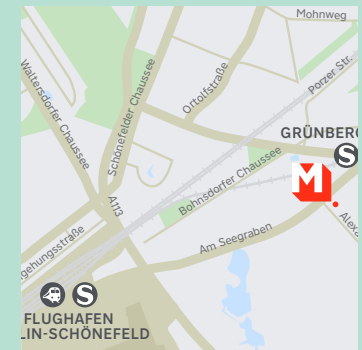
156 rooms/357 beds

Additional Hotel amenities

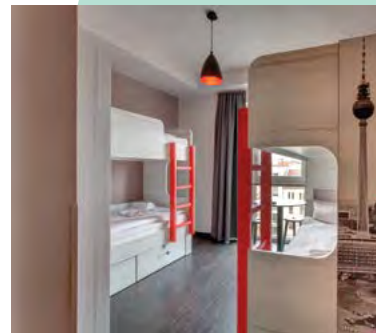
- Hotel parking (subject to a fee)
- Airliner lounge
- Conference area
- Terrace
- Rooftop terrace
- Fitness room

Distance from Airport

5 km BER Brandenburg Airport



Berlin Alexanderplatz



The MEININGER Hotel Berlin Alexanderplatz is located in the historical heart of the city in the district of Prenzlauer Berg. Alexanderplatz, Hackesche Höfe, Museum Island and the New Synagogue are within walking distance. The trendy area around Kollwitzplatz and the Water Tower with small cafés and shops is just a two-minute walk from the hotel. The Senefelderplatz U-Bahn station is situated directly in front of the hotel building.

ALEXANDERPLATZ

The heart of Berlin beats on Alexanderplatz. Its symbol: the "Fernsehturm" television tower. The hotel design adopts this landmark of the city in a creative way – sometimes as wallpaper, sometimes as carpet – and infuses an urban flair into the hotel that is deeply connected to the capital.

90 rooms/328 beds

Additional Hotel amenities

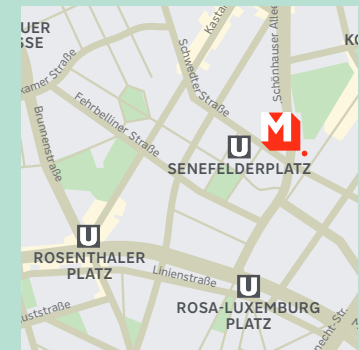
- Conference room
- Boulevard terrace

Distance from Station

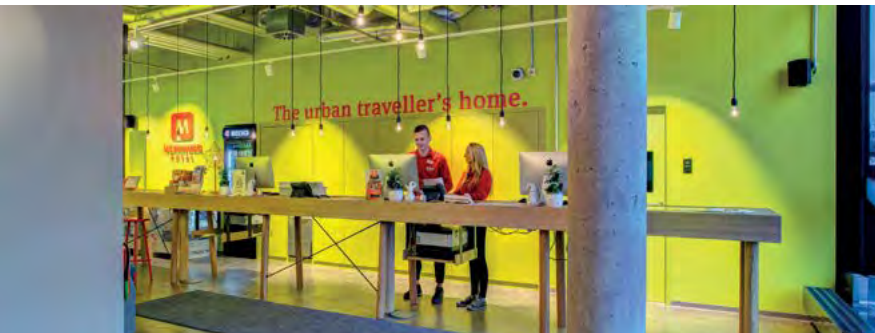
1.4 km Alexanderplatz

Distances

- 1.4 km Alexanderplatz
- 2.3 km Museumsinsel
- 3.2 km Brandenburger Tor



Berlin East Side Gallery



The MEININGER Hotel Berlin East Side Gallery is perfectly situated between the iconic Berlin Wall and the Ostbahnhof station in Friedrichshain. With convenient S-Bahn access right outside, you'll see that exploring the city is a breeze! Plus, must-see spots like the Uber Arena, Oberbaum Bridge, and Alexanderplatz are just a short walk away.



BE UNITED

Hardly any other city shares the joy of being united as much as Berlin. The interior design of the hotel picks up on this spirit with graffiti images and an interior architecture that is reminiscent of new beginnings and progress, breathing new life into it under the motto "be united".

243 rooms/825 beds

Additional Hotel amenities

- Underground parking (subject to a fee)

Distance from Station

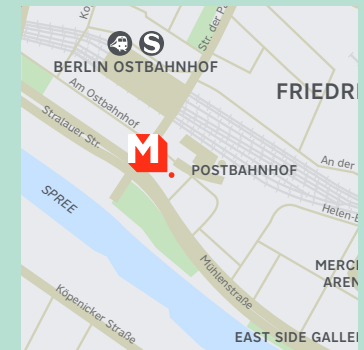
350 m Ostbahnhof

Distances

750 m Uber Arena

1.2 km Oberbaumbrücke

2.2 km Alexanderplatz



Berlin Hauptbahnhof

296 rooms/820 beds

Distance from Main Station

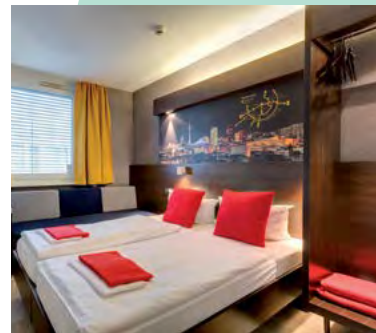
120 m Berlin Hauptbahnhof

Distances

0.5 km Government district

1.3 km Brandenburger Gate

2.0 km Potsdamer Platz



The MEININGER Hotel Berlin Hauptbahnhof is right by Europe's largest interchange station. Just a short walk away are the Spree, the government quarter, Brandenburg Gate, and Potsdamer Platz. Tiergarten, Berlin's famous city park, is also nearby. The Hauptbahnhof S-Bahn station makes it easy to hop around the city and explore more of Berlin's charm.

CITY TOUR FROM THE KU'DAMM TO ALEXANDERPLATZ

Berlin boasts many sights around the main station. The hotel uses photo installations in the lobby and in the rooms to highlight the greatest sights from the Kurfürstendamm to Alexanderplatz and provides guests with inspiration for exploring the capital.



Berlin Mitte “Humboldthaus”



Welcome to the MEININGER Hotel Berlin Mitte Humboldthaus! Nestled in the vibrant Mitte district, this cozy hotel is named after Alexander von Humboldt, who once called this area home. Explore nearby attractions like Friedrichstrasse, Museum Island, New Synagogue, and Hackesche Höfe with ease, thanks to our central location. Plus, with a tram and S-Bahn stop right outside, getting around Berlin is a piece of cake.



ALEXANDER VON HUMBOLDT

The all-round genius lived at Oranienburger Strasse 68 from 1843 to 1859. The hotel's interior design preserves the spirit of his character: individual rooms, an oversized Humboldt comic from Cuba and a partnership with the Museum of Natural History for the design of the breakfast room mean that guests can experience the personality of Humboldt here.

117 rooms/424 beds

Additional Hotel amenities

- Courtyard
- Underground parking (subject to a fee)

Distance from Main Station

1.8 km Berlin Hauptbahnhof

Distances

- 1.5 km Alexanderplatz
- 1.7 km Brandenburger Tor
- 2.4 km Checkpoint Charlie



Berlin Tiergarten



Located on the site of a former brewery in the Moabit district, the MEININGER Hotel Tiergarten is your central hub for exploring Berlin. With excellent connections to the city's airport, Berlin Brandenburg Airport, kiss stress goodbye! Also, the nearby Turmstrasse U-Bahn station makes sure you have easy access to popular attractions like Kurfürstendamm and Zoologischer Garten. Surrounded by government buildings, parks, and a shopping center, our location is perfect for leisurely strolls and soaking up the city's cool vibes.

MEININGER Hotel Berlin Tiergarten, Turmstraße 25, 10559 Berlin, Germany



238 rooms/847 beds

Additional Hotel amenities

- Coworking space

Distance from Main Station

1.9 km Berlin Hauptbahnhof

Distances

1.5 km Bellevue Palace

1.7 km Victory Column

2.0 km Tiergarten

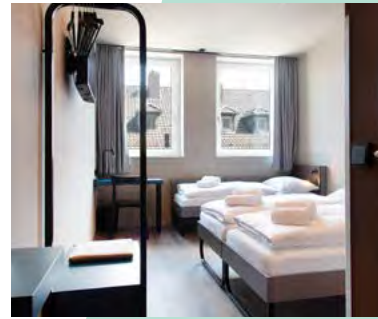
MORE URBAN A BIT INDUSTRIAL

The brick building and the chimneys of the former brewery attest to the time when Berlin developed into a world metropolis. The hotel's décor reflects the industrial style of this era and forges links from the 19th century to the present day with creative design.



Bremen Hauptbahnhof

126 rooms/378 beds



Distance from Main Station

550 m Bremen Hauptbahnhof

Distances

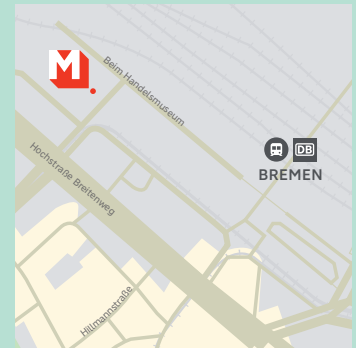
- 1 km Schlachte
- 1.5 km Bremen Town Musicians
- 2 km Schnoor Viertel



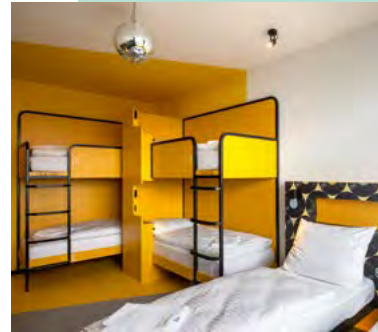
The MEININGER Hotel Bremen, with 126 rooms and 378 beds, is conveniently located close to the main station, near the new long-distance bus terminal. With easy access to public transport, shopping, and entertainment, it's the perfect base for exploring. Check out attractions like the historic town hall and the charming Schnoor quarter near the hotel. The famous Bremen Town Musicians statue is just 1.5 km away, or take a leisurely walk along the Schlachte, a scenic promenade along the River Weser in the old town, just 1 km from the hotel.

A COLLAGE OF A CITY

With its UNESCO-listed Medieval monuments, seafaring traditions and maze of winding streets, Bremen is a fascinating blend of the gothic and the contemporary. The MEININGER Hotel Bremen Hauptbahnhof reflects Bremen's one-of-a-kind Hanseatic ambience, laid-back rap vibe and its nickname 'City of Space'. In our guest rooms, inspired by the four heroes of Grimm's 'Town Musicians of Bremen', you'll find your own fairytale.



Dresden Zentrum



The MEININGER Hotel Dresden is perfectly situated right next to the central station, making it easy to reach by public transport. Trams, buses, and trains from across Europe stop nearby. You can stroll to the city center with its shops and historic landmarks like Semperoper, Frauenkirche, and Zwinger. We have 173 rooms with a total of 719 beds spread across 3 floors (2nd, 3rd, and 4th). The first floor is for public areas and reception.

ODE TO JOY

Baroque architecture, history, musical culture and modern ambience: dive into Dresden's world. Inspired by this majestic city, the MEININGER Hotel Dresden has created spaces resembling soundscapes inspired by Schiller's "Ode to Joy" while reflecting its essence of togetherness. The communal areas are designed to offer you a concert-hall-like experience by recreating the glamour and spotlight features of a stage. With disco balls and vinyl wallpapers in the rooms, the musical theme dominates while combined with a space setup that aims at bringing people together.

173 rooms/719 beds

Additional Hotel amenities

- Underground parking (subject to a fee)
- Terrace

Distance from Main Station

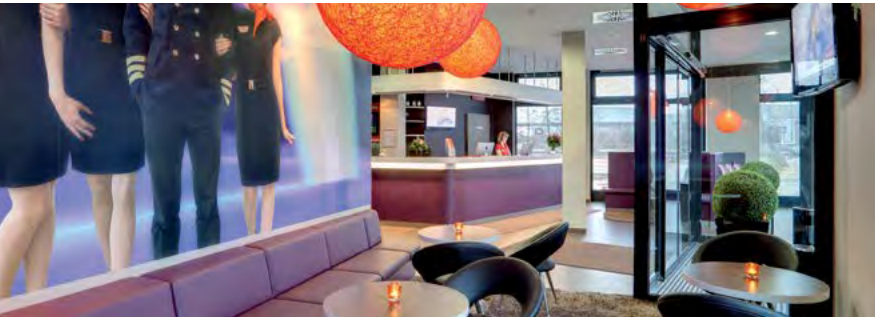
190 m Hauptbahnhof

Distances

- 1.4 km Dresdner Zwinger
- 1.6 km Semperoper Dresden
- 1.7 km Frauenkirche Dresden



Frankfurt /Main Airport ✈️



168 rooms/418 beds

Additional Hotel amenities

- Underground parking
(subject to a fee)
- Airliner lounge
- Conference room
- Fitness room

Distance from Airport

1.7 km Frankfurt (Main) Airport

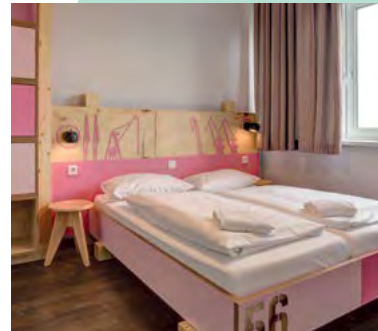
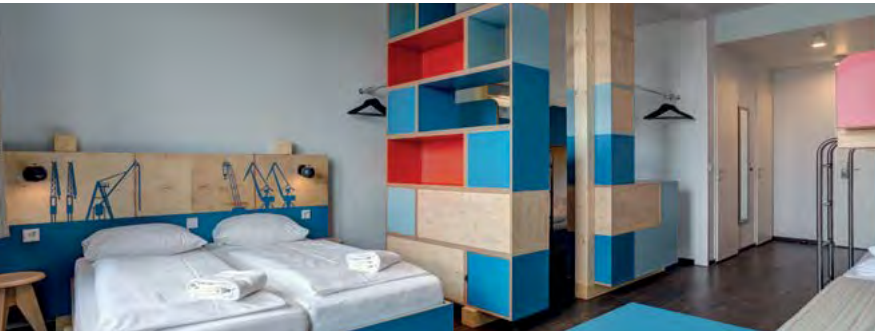
The MEININGER Hotel Frankfurt/Main Airport is right next to the airport in the new Gateway Gardens district. It's just a short walk from Terminal 2 and the Gateway Gardens S-Bahn station, offering easy access to... the rest of the world and the Hessian state capital. You can reach the city center full of landmarks like the Römer and St. Paul's Church in about 15 minutes by S-Bahn. Plus, there's a shuttle service between the hotel and Terminal 1 every 30 minutes* (*from 6 AM to 1:30 AM / 4 PM to 10:30 PM), costing €6/per person from the hotel to Terminal 1 and free from Terminal 1 to the hotel.

THE GOLDEN AGE OF AVIATION

Flying was considered the epitome of modern technology and absolute freedom in the 60s. This era is reflected in the hotel's design with round shapes, retro colours and futuristic patterns. The hotel takes guests back to the golden age of aviation in a unique way.



Hamburg City Center



The MEININGER Hotel Hamburg City Center is located right next to Altona railway station and offers excellent connections to the sights and attractions of the Hanseatic city. Those who want to experience even more authentic flair after visiting the Reeperbahn, HafenCity, Landungsbrücken, Speicherstadt and Fish Market can stroll through Altona and wander along the surrounding streets with cafés and small shops.

PORT OF HAMBURG

The interior design of the hotel is dedicated to Hamburg's gateway to the world. Hanseatic flair radiates throughout the hotel – enriched by many wooden elements, Scandinavian-style furniture and maritime souvenirs. This creates a guaranteed Nordic homeliness.

116 rooms/423 beds

Additional Hotel amenities

- Underground parking (subject to a fee)

Distance from Station

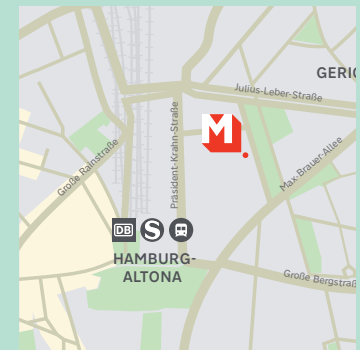
600 m Hamburg-Altona

Distances

0.5 km Altona railway station

1.0 km Reeperbahn

1.5 km St. Pauli, Fischmarkt



Heidelberg Hauptbahnhof



The city center including its romantic old town, the river Neckar and the castle can be reached quickly and easily from the MEININGER Hotel Heidelberg Hauptbahnhof, either via public transport or on foot. The main train station itself is a short walking distance. The new district of Bahnstadt is also nearby which has several cosy cafes and restaurants.

KNOW-HOW

Studying, research and knowledge have a long tradition in Heidelberg. True to the motto „know-how“, the interior design of the hotel guarantees smart space solutions in the university city. Asymmetrical shapes, colour contrasts and a material mix of metal and wood turn apparent opposites into a harmonious whole.

100 rooms/331 beds

Additional Hotel amenities

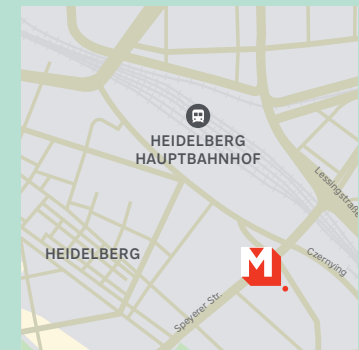
- Underground parking
(subject to a fee)

Distance from Main Station

850 m Heidelberg Hauptbahnhof

Distances

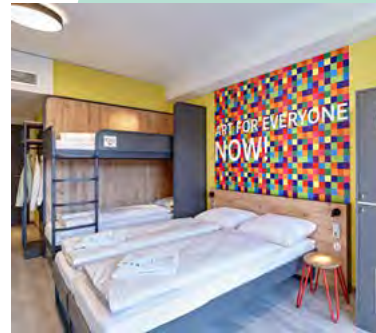
850 m S Printing Horse
2.6 km Zoo Heidelberg
3.2 km Market place



Köln West



The MEININGER Hotel Köln West has over 200 rooms and easy access to the city center. There's a bus stop right in front of the hotel, and the nearest S-Bahn stop is just a 10-minute walk away. Cologne/Bonn Airport is about a 30-minute ride by public transport.



ART FOR EVERYONE NOW

Where can you get wowed by an over-600-year-old cathedral, learn to speak Kölsch, join a carnival and find a thriving LGBTQI+ community? Say hi to Cologne. Create awesome memories, express yourself and get ready to go bananas (in a good way) while staying in the vividly colorful MEININGER Hotel in Cologne. Spot our conversation-starter motto "Art for everyone now" and free your inner artist.

209 rooms/750 beds

Additional Hotel amenities

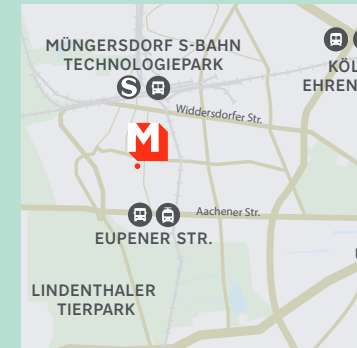
- Terrace

Distance from Station

800 m Müngersdorf S-Bahn
Technologiepark

Distances

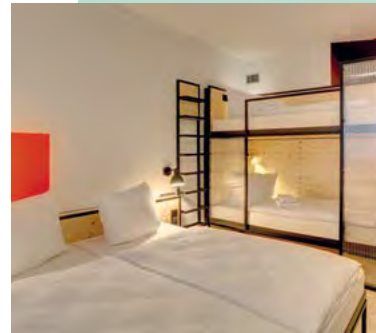
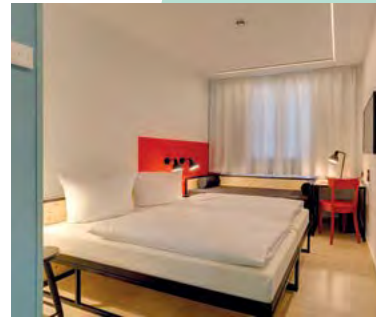
1.7km RheinEnergieSTADION
2.1km Lindenthaler Tierpark
5.4km Kölner Dom



Leipzig Hauptbahnhof



The MEININGER Hotel Leipzig Hauptbahnhof is situated in the heart of the beautiful Saxon metropolis and in the immediate vicinity of the main railway station. It is less than a 15-minute walk from the hotel to sights such as the Gewandhaus, Opera House, MDR Panorama Tower and Leipzig Zoo. The shopping street around the market place, restaurants, bars, famous museums and impressive churches are also only a stone's throw away.



ART IN PROGRESS

Art shapes and drives the city of Leipzig. The interior design of the hotel is a creative mix of shapes and colours, formed into a – not quite finished – work of art, which guests complete through their presence. The hotel won the “Special Mention” 2019 German Design Award for its furnishing concept.

126 rooms/404 beds

Additional Hotel amenities

- Terrace

Distance from Main Station

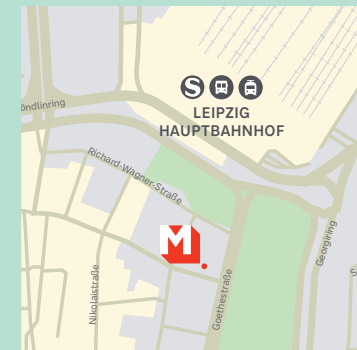
0.3 km Leipzig Hauptbahnhof

Distances

170 m Oper Leipzig

800 m Thomaskirche

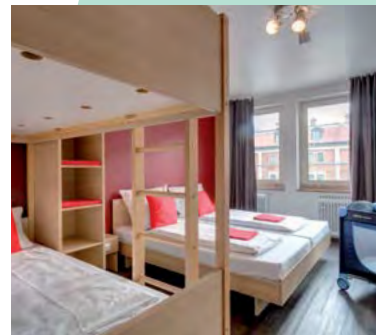
1.2 km Zoo Leipzig



München Zentrum



The Theresienwiese, known as the Oktoberfest site, is only an approx. 10-minute walk from the MEININGER Hotel München Zentrum. There is a tram stop and the Hackerbrücke S-Bahn station in the immediate vicinity. Sights including Marienplatz, the Church of Our Lady and the Kaufingerstrasse shopping street can be reached by S-Bahn in around 10 minutes. The famous Augustiner brewery is located directly opposite the hotel.



ALMGOLD CONTRASTS

Bavarian charm, easy-going nature and a sense of style all go hand in hand in Munich. The interior design combines a quaint alpine flair of checked patterns and rustic wooden elements with a modern linear theme, creating a perfect feel-good atmosphere.

94 rooms/394 beds

Additional Hotel amenities

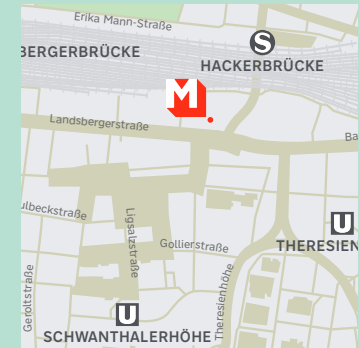
- Underground parking (subject to a fee)

Distance from Main Station

2.6km München Hauptbahnhof

Distances

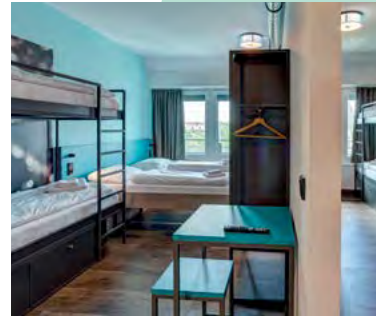
- 0.6 km Oktoberfest, Theresienwiesen
- 2.7 km Frauenkirche
- 2.8 km Marienplatz



München Olympiapark



The MEININGER Hotel München Olympiapark is centrally located near the Olympic Park on Landshuter Allee. The BMW World, the Nymphenburg Palace and Leopoldstrasse, famous for its bars and restaurants, can be conveniently reached from here. The city center is 15 minutes away by public transport. There is a bus and tram stop directly in front of the hotel. The Gern U-Bahn station is around a 10-minute walk away.



URBAN DYNAMICS

Munich has long since ceased to be just the capital of Bavarian conviviality. „Faster, higher, further“ – the powerful, bustling dynamism can now be felt in the Isar metropolis. The hotel's interior design concept translates this euphoric flair into an interior full of energy and vibrancy.

172 rooms/822 beds

Additional Hotel amenities

- Underground parking
(subject to a fee)

Distance from Main Station

3.4 km München Hauptbahnhof

Distances

500 m Olympic Park
2.7 km Schloss Nymphenburg
3.5 km Viktualienmarkt



Budapest Great Market Hall



The MEININGER Budapest Great Market Hall is located south of the city center, right next to the Great Market Hall, called in Hungarian: Nagy Vásárcsarnok. From here, countless attractions, bars, restaurants and the Danube promenade are within easy walking distance. The Váci utca shopping street that leads to the popular Vörösmarty Square in the center of Pest's Old Town is in direct vicinity. The main station is around 10 minutes away by subway.



GREAT MARKET HALL

The design concept of the hotel is inspired by the neighbouring market hall and Hungarian craftsmanship. Round pillars and half-tiled walls in the breakfast area, rustic metal constructions in combination with light wood in the lobby and traditional patterns as well as colourful elements bring authentic local flair to the hotel.

184 rooms/744 beds

Additional Hotel amenities

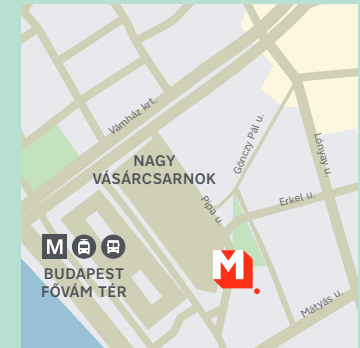
- Underground parking (subject to a fee)
- Working spaces

Distance from Main Station

3 km Budapest-Keleti

Distances

- 1.4 km Gellért Thermal Baths
- 1.8 km Dohány Street Synagogue
- 2.6 km Chain Bridge



Milano Garibaldi



The MEININGER Milano Garibaldi is situated in Milan's city center, close to the Garibaldi railway station and the famous monumental cemetery. It's well-connected to public transportation, making it easy to explore the city. You can reach iconic landmarks like Castello Sforzesco, Arco della Pace, and Milan Cathedral within 15 minutes by metro.



URBAN CONNECTIVITY

Milan never stands still – the Garibaldi railway station is one of the city's most important hubs, just a few minutes from the hotel. The interior design of the building creatively interprets themes relating to movement, speed and networking within Italy's second-largest city.

80 rooms/268 beds

Additional Hotel amenities

- Parking (subject to a fee)

Distance from Station

1.9 km Milano Porta Garibaldi

Distances

- 1.2 km Via paolo sarpi (Chinatown)
- 2.1 km Piazza Gae Aulenti - Corso Como
- 2.3 km Isola (food district)



Milano Lambrate



Situated directly beside Lambrate railway station, MEININGER Milano Lambrate offers excellent public transport connections. Sights such as the Teatro alla Scala and Milan Cathedral can be reached by tram in 15 minutes, Linate Airport is a 25-minute bus ride away. Lambrate is a popular student district with a relaxed atmosphere and is home to many cafés and restaurants.



LAMBRETТА

The scooter is the epitome of Italian ease. One of the best-known models, the Lambretta, was produced in the former Milan working-class district of Lambrate and this is where it got its name. The hotel's interior design pays homage to the district's most famous "daughter".

131 rooms/475 beds

Additional Hotel amenities

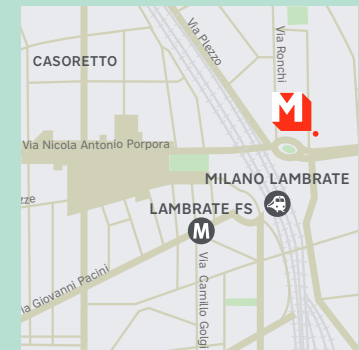
- Terrace

Distance from Station

150 m Milano Lambrate

Distances

- 4.3 km Piazza Gae Aulenti -
Corso Como
- 4.3 km Isola (food district)
- 5.2 km Duomo di Milano



Roma Termini

117 rooms/315 beds

Distance from Main Station

0.8 km Roma Termini

Distances

0.8 km Piazza della Repubblica

2.2 km Trevi Fountain

2.4 km Colosseum



The MEININGER Roma Termini with its typical Italian charm is located in an old renovated building on the Via San Martino della Battaglia near the main railway station. The Castro Pretorio metro station, which is only a 2-minute walk away, provides excellent connections to the Colosseum and Roman Forum. Sights including the Vatican, Spanish Steps and Trevi Fountain can also be conveniently reached from the main station.

BEHIND THE SCENES

Rome is a city of film and the setting for many famous cinema productions. What would film classics like "La dolce vita", "Eat, Pray, Love" or "James Bond" be without the scenes from the Italian metropolis? The hotel's design concept immerses guests into the world of film and allows them to take a look behind the scenes of a film set.



Venezia Mestre



The fourth MEININGER hotel in Italy has opened in Venice, conveniently located near the Venice-Mestre train station, just a 5-minute walk away. From there, you can easily reach the iconic sights of Venice, like St. Mark's Square and the Rialto Bridge, in just 10 minutes by bus and train. The seven-story building offers 112 rooms and 434 beds, making it an ideal choice for all of you, budget-conscious travelers, wanting to explore Venice without breaking the bank!

MEININGER Venezia Mestre, Via Ca' Marcello 8/C, 30172 Venice, Italy



112 rooms/434 beds

Distance from Station

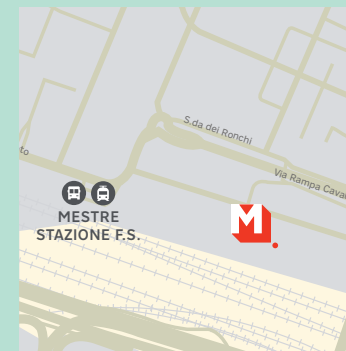
260 m Mestre Stazione F.S.

Distances

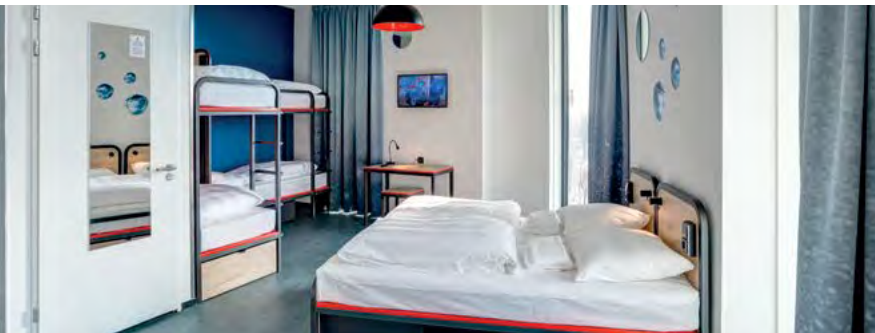
- 1.4 km Museo M9 Mestre
- 2.2 km Forte Marghera
- 3.9 km Parco San Giuliano

VENICE'S DREAMY AESTHETICS

Renowned history. Gothic vibes. Romantic waterways. Iconic Carnival & Biennale. Venice is like a dreamy film-set. And the brand-new MEININGER Venezia Mestre echoes exactly that in its artistic public spaces. Feel cozy in our pastel-toned rooms inspired by the Venice Biennale itself, and prepare for an eclectic mix coming your way. Ready to star in your own Venice-like movie?



Amsterdam Amstel



Find the MEININGER Hotel Amsterdam Amstel in the east of Amsterdam, close to the water directly next to the Amstel railway station. This makes it an ideal starting point for exploring the city. You can stroll along the canals from here into the trendy district of De Pijp with its cafés, bars and shops. Or hop on the metro to get to the historic city center in just 8 minutes.

SEA LEVEL

In Amsterdam, water makes its way through the city along the famous 100+ canals. It is no wonder that the residents live in harmony with these canals and the water. This coexistence is reflected in the interior design of the hotel.

185 rooms/802 beds

Additional Hotel amenities

- Parking (subject to a fee)

Distance from Main Station

4.4 km Amsterdam Centraal

Distances

1.3 km Weesperzijde

2.9 km Albert Cuyp Markt

3.5 km Museum Quarter



Amsterdam City West



Stay at the MEININGER Hotel Amsterdam City West, just one stop from Centraal station. With easy access to public transport, you can explore the city hassle-free. Our hotel is near Sloterdijk station, a 10-minute drive from downtown and Schiphol Airport. Enjoy canal cruises, visit the Van Gogh Museum, or hit the beach in Zandvoort—all within reach. And remember to check out our corridors decorated with famous Flemish artwork!



VINCENT VAN GOGH

The interior design of the public areas is inspired by Vincent van Gogh's most famous works. Guests can immerse themselves in the colours of his paintings in the lobby.

321 rooms/1177 beds

Additional Hotel amenities

- Underground parking (subject to a fee)

Distance from Station

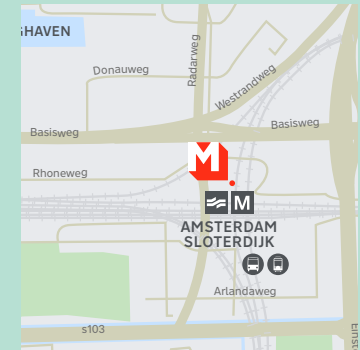
190 m Amsterdam Sloterdijk

Distances

4.9 km Lovers Canal Cruise

5.1 km Vondelpark

5.3 km NDSM



Kraków Centrum

135 rooms/509 beds



Additional Hotel amenities

- Underground parking (subject to a fee)
- Conference room
- Terrace

Distance from Main Station

2 km Kraków Główny

Distances

950 m Rynek Główny
1.2 km Kraków Barbican
1.5 km Zamek Wawel



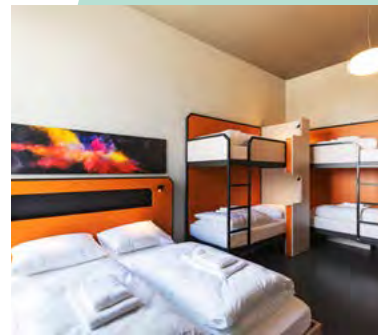
The MEININGER Kraków Centrum is being built east of Old Town in the Grzegórzki district and will offer 509 beds and 135 rooms. From the hotel, it's a 15-minute walk to the historic city center. The main train station is a 10-minute tram ride away. Located along the new railroad line between Main Station and Rudzice, the hotel has direct connections to and from the Kraków airport.

FLOW OF CREATION

Welcome to the brand-new MEININGER Kraków Centrum where alchemy, astronomy and royal vibes meet under one roof. Dive in the merchants' traditional craft and the history of chess with us. Go with the "Flow of Creation", our general theme, and experience moments to remember while on your Kraków adventure. Ready for your own bewitching visit?



Genève Centre Charmilles



The MEININGER Hotel Genève Centre Charmilles is right near the city center and offers 104 rooms and 362 beds. With its great location, it's the perfect place to start exploring the city and all its charm. You can reach the city center, Switzerland's largest historical center, and Lake Geneva with just a 20-minute walk or a 10-minute bike ride. Plus, there's a bus stop and a shopping center right in front of the hotel.

BIG BANG

Nowhere else is research into the Big Bang as in-depth as in Geneva. And nowhere else is the origin of the universe so tangible as here. Inspired by the Big Bang and science, the interior design of the MEININGER Hotel Geneva plays with infinity, forces of nature and light spectacles. The ideas for furnishings, materials and creative interior design bring to life the forms and colors of the universe and the world of physics.

104 rooms/362 beds

Additional Hotel amenities

- Parking (subject to a fee)

Distance from Main Station

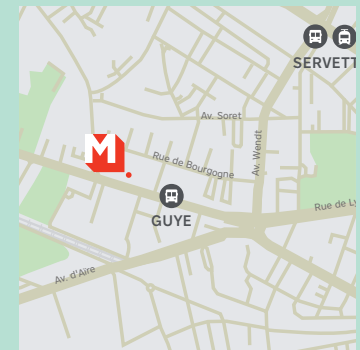
1.8 km Gare de Genève

Distances

2.6 km Place du Bourg-de-Four

2.6 km Palais des Nations

3.3 km Jet d'eau



Zürich Greencity



The MEININGER Hotel Zürich Greencity is part of the Greencity district, offering 174 rooms and 582 beds. It's a short S-Bahn ride from the city center and its attractions. For travelers exploring Switzerland, it's a convenient stopover with easy access to Central Switzerland via the A3 motorway. The hotel also has an underground car park with 35 spaces available.

MEININGER Hotel Zurich Greencity, Maneggstrasse 41, 8038 Zürich, Switzerland

174 rooms/ 582 beds

Additional Hotel amenities

- Underground parking (subject to a fee)

Distance from Station

650 m Zürich Manegg

Distances

- 3.3 km FIFA Museum
- 4.4 km Downtown Zürich
- 4.8 km Lindt Home of Chocolate

DADA

Zurich is the city of Dada—an art movement of the early 20th century favouring unrestrained imagination and expressing irrationality. The interior design of the MEININGER Hotel Zurich is a reflection of this kind of modern art and brings animation and life into ordinary objects like furniture, decoration and other design elements.



Booking & contact

For travellers up to 11 people in all:
welcome@meininger-hotels.com

For groups from 12 people:
groups@meininger-hotels.com

For contracts & arrangements:
sales@meininger-hotels.com

